

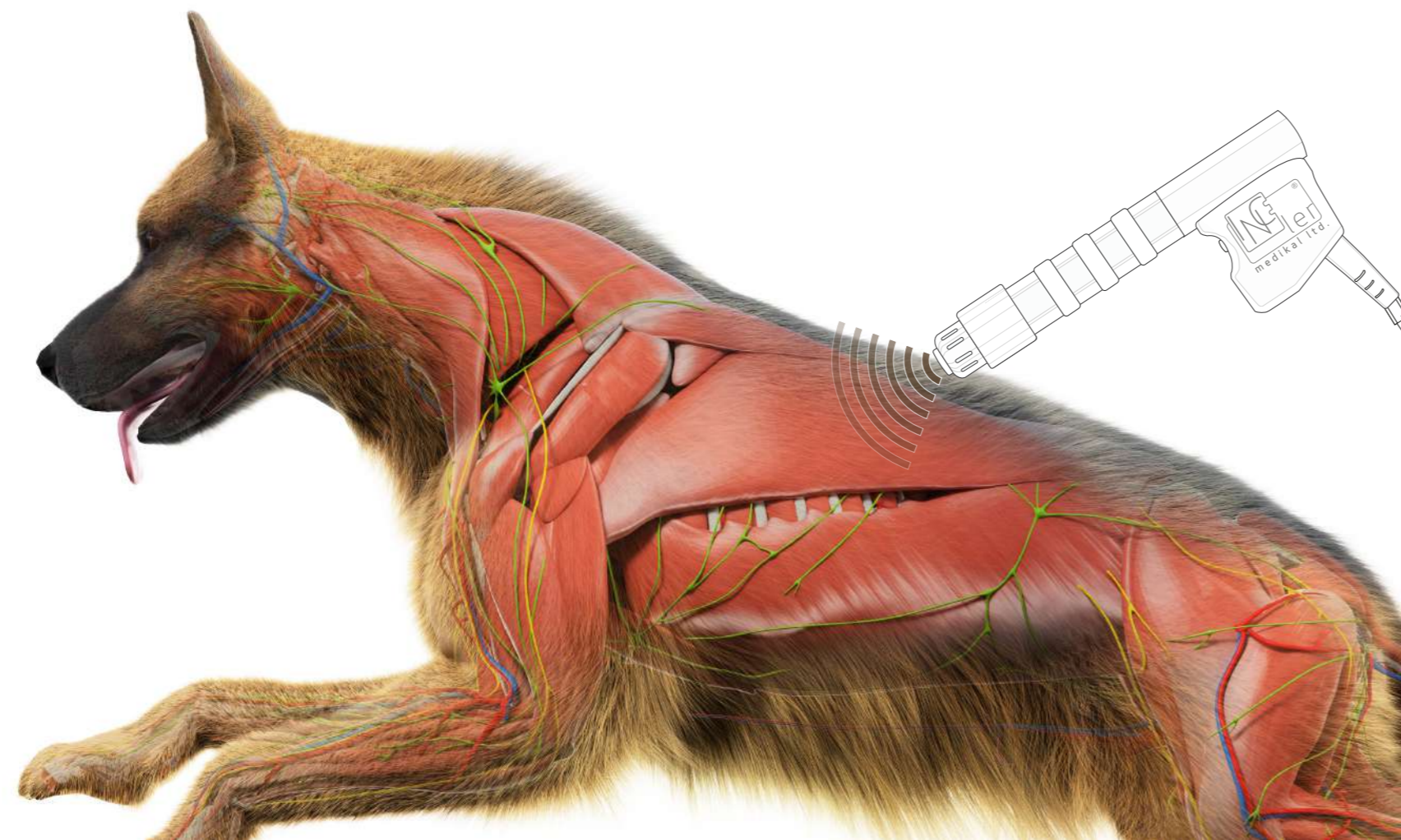


# MODUS VET. ESWT®

*Extracorporeal shockwave therapy  
for Veterinary Medicine*

RADIAL & FOCUSED SHOCKWAVE THERAPY





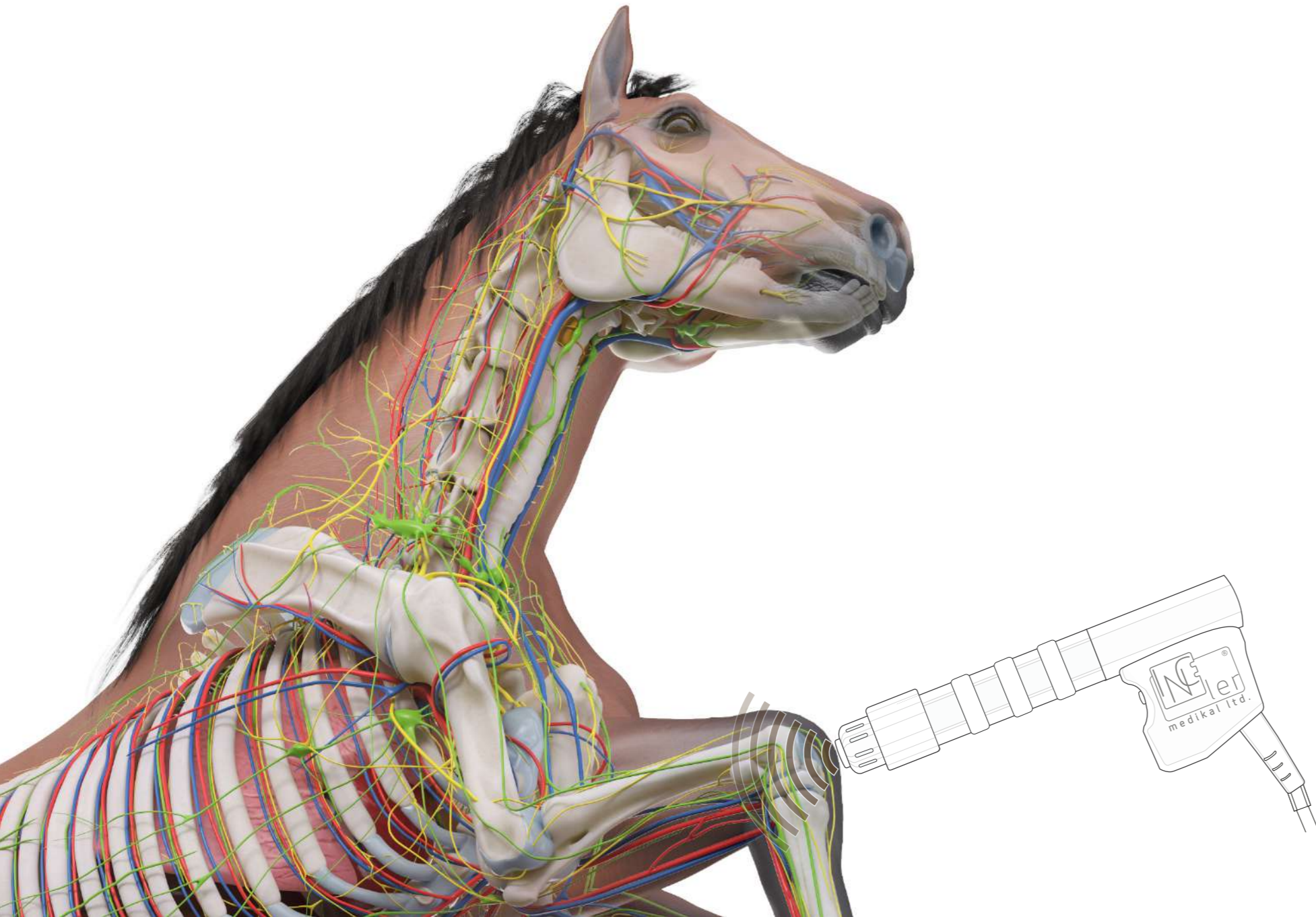
## EXTRACORPOREAL SHOCK WAVE THERAPY FOR VETERINARY MEDICINE

*Shockwave therapy helps horses and small animals heal faster and optimize their physical performance. It's a non-invasive hands-on therapy method that gives you control throughout the treatment process with maximum effectiveness and comfort of your patients.*

The shock wave machine is lightweight for on-site treatment in barns, events and general out-clinical remote areas. It's compact enough for vets to treat small animals comfortably in clinics and/or at home. Shockwave therapy is easy to administer with the right tool. Even vet technicians and non-equine professionals can perform shock wave therapy, making it an effective and convenient injury treatment.

Shockwave therapy uses sound waves that is penetrated deeper than ultrasound or lasers to stimulate tissue regeneration and bone healing for faster and improved treatment results. It increases the blood flow to affected areas - leading to the development of new blood vessels -, stimulates collagen, and dissolves calcium build-up to treat the root cause of injury. Shockwave therapy is drug-free, significantly alleviates pain, and produces more pressure for the long-term health of your patients.



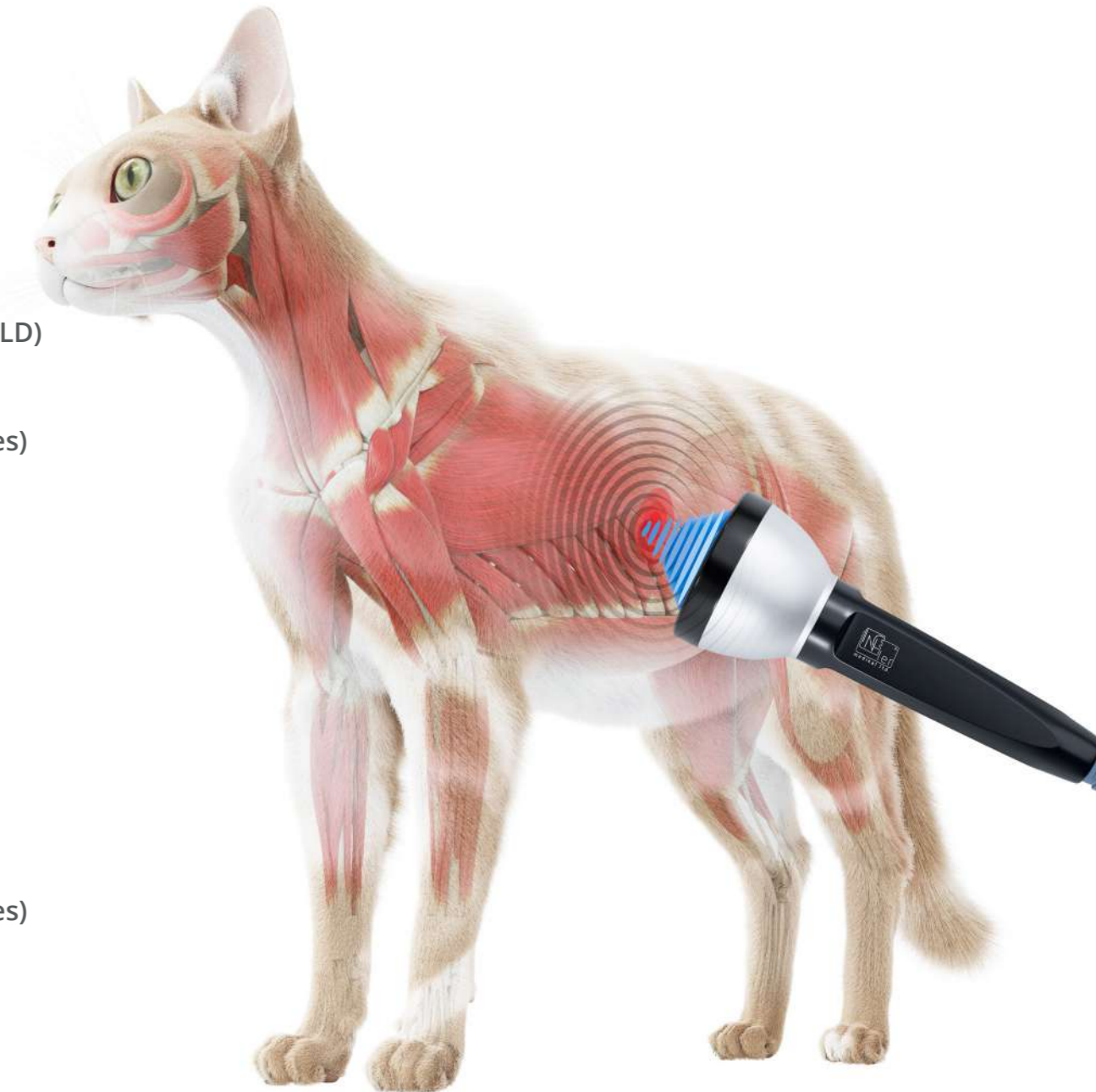


### **INDICATIONS IN HORSES**

- > Insertional desmopathy
- > Tendinopathy
- > Osteoarthritis
- > Fissures, stress fractures, osteolysis
- > Ligament injuries
- > Degenerative suspensory ligament desmitis (DSL D)
- > Podotrochlosis
- > Kissing spines
- > Muscle treatment (trigger points, tensed muscles)
- > Wound healing
- > Scar tissue

### **INDICATIONS FOR SMALL ANIMALS, ESPECIALLY DOGS**

- > Tendinopathy
- > Osteoarthritis (e.g. spondylarthritis)
- > Hip and elbow dysplasia
- > Fissures, stress fractures
- > Osteochondritis dissecans (OCD)
- > Cauda equina syndrome
- > Muscle treatment (trigger points, tensed muscles)
- > Wound healing
- > Scar tissue



## > MODUS VET. ESWT RADIAL SHOCK WAVE THERAPY SYSTEM

- > Modus Extracorporeal Shock Wave Therapy system allows to apply high pressure and high energy in a very short time, reducing the number of treatment sessions and providing higher success.
- > It is the most powerful Radial Shockwave Therapy device on the market.
- > Provides shock hits between 1-22 Hz and 1-5 bar.
- > It is highly beneficial with its lightness and portability. (10 kg)
- > The device provides ease of use with its color and touch screen technology. In addition, the parameters set during the treatment can be easily followed on the device screen and can be changed as desired during the treatment.
- > Modus VET. ESWT device provides archive support to the user with its patient record, and follow-up menu.
- > The system provides visual and written expression support to the user with the ready-made treatment programs in its content. The preferred applicator selection can be made according to the preferred treatment and usage area.
- > Modus VET. ESWT applicators can be cleaned with medical surface sterilizations. The applicators are resistant to ethylene oxide and medical surface sterilization.
- > The Modus VET. ESWT system can be controlled via the touch screen, the button on the handle or the commands given from the foot pedal. When the set number of beats is reached at the beginning of the treatment, the system automatically stops and the user can intervene in the device as they wish.
- > Modus VET. ESWT has 3.000.000 shot capacity.
- > Effect of treatment done by Modus VET. ESWT is transmitted to body as 5 bars.
- > Since the Modus VET. ESWT has a trolley, it is portable. It can be easily moved by detaching from its stand when desired.



Touchscreen interface  
With built-in compressor  
Modus VET. ESWT



Modus VET. ESWT  
Radial Handpiece



Touchscreen interface  
Modus VET. ESWT®  
Focused Shock Waves

## > MODUS VET. ESWT FOCUSED SHOCK WAVE THERAPY SYSTEM

- > Modus ESWT Shock Wave System is a non-invasive treatment method based on focusing shock waves on the desired area of the body via a liquid-filled silicone cap. This method increases vascularization in the area affected and enables the body's healing mechanisms to come into play.
- > Modus ESWT provides 1-4 Hz and 0.01-0.25mJ with 25 levels.
- > The device provides ease of use with its colored touch screen technology. In addition, the parameters set during the treatment can be easily followed on the device screen and can be changed as desired during the treatment.
- > Modus ESWT device provides archive support to the user with its patient registration and follow-up menu.
- > The system provides video and written support to the user with the ready-made treatment programs in its content. Different caps are available for different treatments.
- > When the number of beats set at the beginning of the treatment with Modus ESWT are reached, the system automatically stops and the user can intervene as desired.



Modus VET. ESWT  
Focused Handpiece



Veterinary



*inceler medikal*

**İNCELERMEDİKAL.COM**

**İnceler Medikal**  
İvedik OSB Mah. 1472. Cad.  
No: 120 Yenimahalle  
Ankara/Türkiye

tel: +90 312 255 3346  
fax: +90 312 255 3347  
info@incelermedikal.com



TECHNOLOGY FOR HEALTH